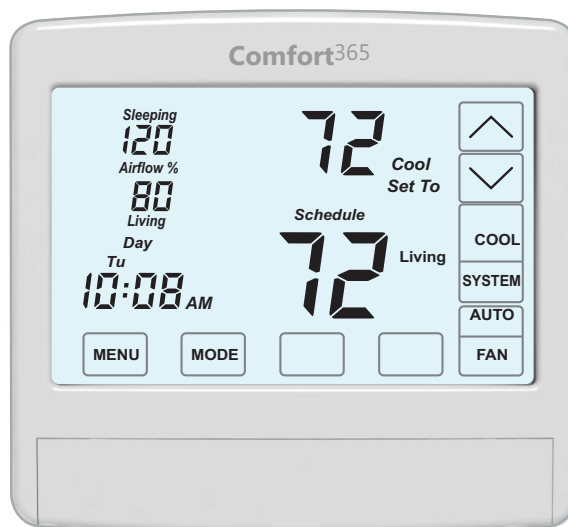


The C365C42 communicating touch thermostats connect to a Wiring Hub installed at the equipment using a 4-wire thermostat cable. When used with the WH11 or WH32, the thermostat can control heating and cooling and the airflow to the sleeping and living areas to provide a uniformly comfortable home in all seasons.

When used with the WH42 Wiring Hub, the thermostat provides airflow control, fresh air control, ERV/HRV control, whole house fan or economizer control.

The Wiring Hubs can use either wired or wireless temperature sensors making them easy to install in replacement installations.



Pat. Pending



### Features

- Automatically adjusts airflow to keep the sleeping and living area temperatures to within 2°F.
- Reduces energy usage by 30% at night by directing 30% more airflow to the sleeping area and 30% less airflow to the unoccupied living area.
- Uses the sleeping area temperature sensors at night to control heating and cooling calls.
- Uses wired or wireless, battery powered temperature sensors.
- Manual or automatic airflow control.
- No bypass required. Airflow is maintained at rated CFM.
- About half the cost of a zoning system. Eliminates installing a zoning panel, 24VAC transformer and electrical box, discharge air temperature sensor and adjusting bypass damper. Only 9 to 11 wires compared to 25 to 27 for zoning.
- Easy plug and play upgrade to the WiFi thermostat. Plugs onto the same subbase.

### Specifications

#### Compatible Equipment

Gas/electric, 2H/2C.  
Heat pump, 2H/2C/1Aux.

#### Thermostat Modes

Schedule, Hold or Vacant.

#### System Modes

Heating, Cooling, Auto or Off. Heat pumps with auxiliary heating have Em Heat mode.

#### WHF Control (WH42 Wiring Hub)

The ECool mode controls a WHF or Economizer using temperature or a built-in 1 to 8-hour timer.

#### Fresh Air (WH42 Wiring Hub)

Intelligent control of fresh air per ASHRAE 62.2 with temperature limits for inhibiting fresh air in severe weather.

#### ERV/HRV (WH42 Wiring Hub)

Controls an ERV or HRV recovery unit during fresh air operation.

#### Fan Modes

Auto or Continuous(On).

#### Schedules per Day

Morning, Day, Evening and Night.

#### Schedules Format

5/2 day format.

#### Temperature Override

Overrides scheduled temperature for 3 hours.

#### Airflow Modes

Automatic or manual.

#### Nighttime Airflow Option

Directs 30% more airflow to the sleeping area and uses the sleeping area temperature to control heating and cooling.

#### Airflow Override

Overrides automatic airflow for three hours to direct more airflow upstairs or downstairs for special occasions.

#### LCD with Touch

Large FSTN display with wide viewing angle with resistive touch panel.

#### Power

Uses equipment 24VAC power with two AA batteries for backup.

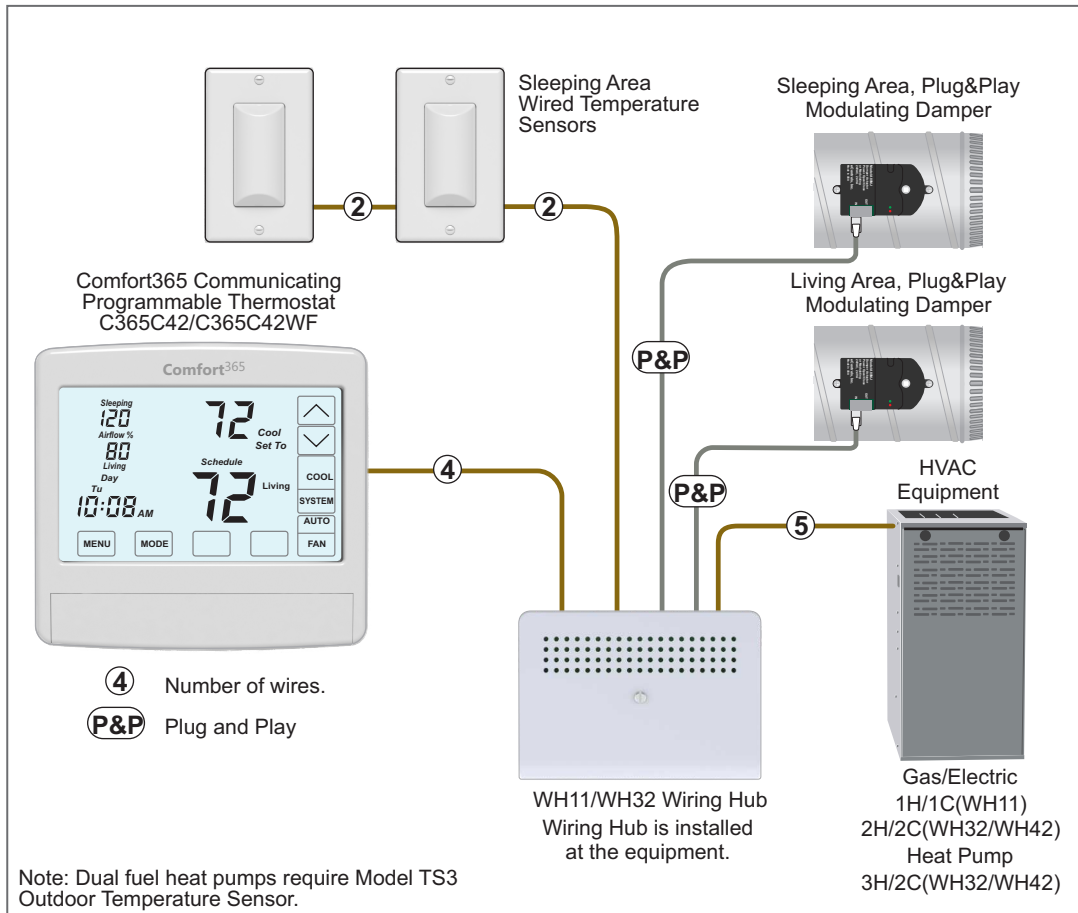
#### Optional WiFi Thermostat and App

Model C365C42WF WiFi thermostat plugs onto same subbase with no wiring changes.

#### Mechanical

4.68w x 4.30h x 1.10d inches.

## C365C42 or C365C42WF with WH11 or WH32 with Wired Sensors



### Comfort365 Thermostats

Model C365C42  
Model C365C42WF  
With WiFi

### Temperature Sensors

Model TS510W  
For single sleeping area  
sensor installations  
Model TS520W  
For dual sleeping area  
sensor installations

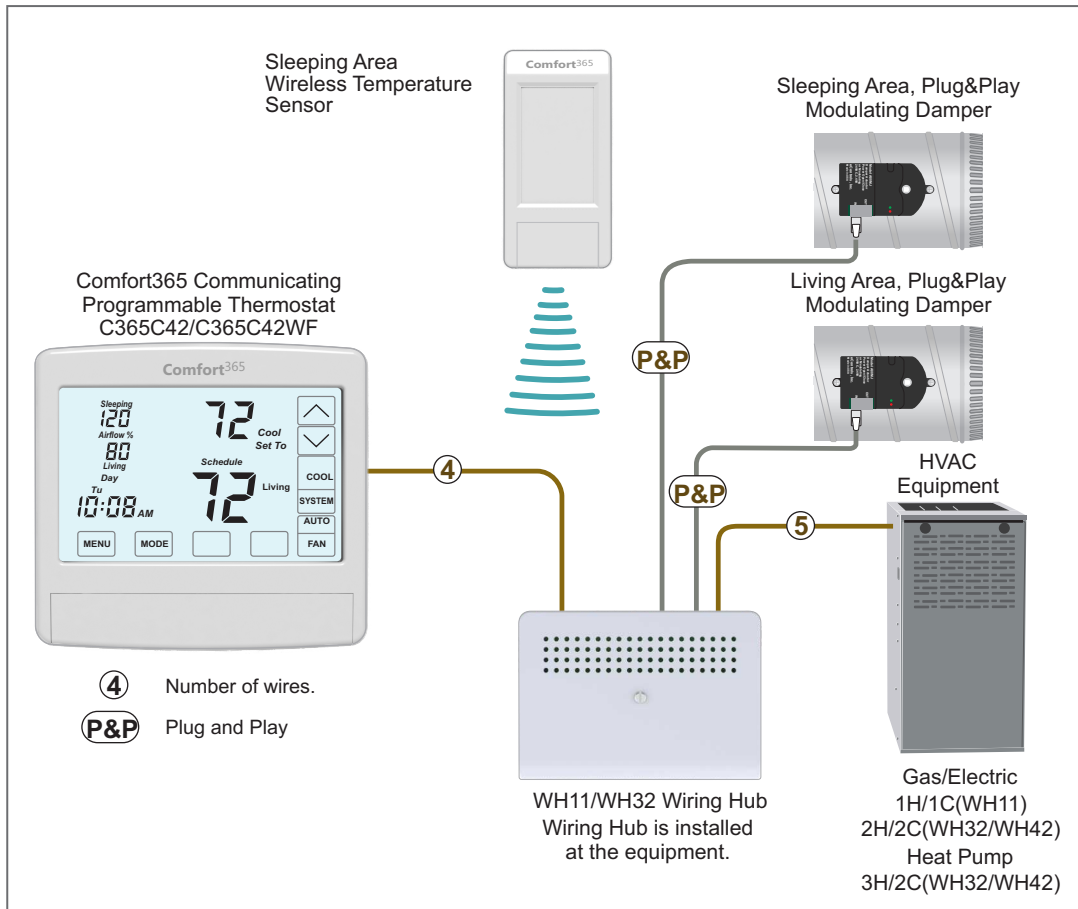
### Wiring Hub

Model WH11  
For single stage G/E  
Model WH32  
For multi-stage G/E or HP

### Dampers

Model R80CJ-XX  
Plug&Play  
Modulating Damper  
XX is 6 to 20-inch diameter

## C365C42 or C365C42WF with WH11 or WH32 with Wireless Sensors



### Comfort365 Thermostats

Model C365C42  
Model C365C42WF  
With WiFi

### Temperature Sensors

Model TS5WL  
For single or dual sleeping  
area sensor installations  
Model ELR1  
eLink Plugin Radio required  
with wireless sensors

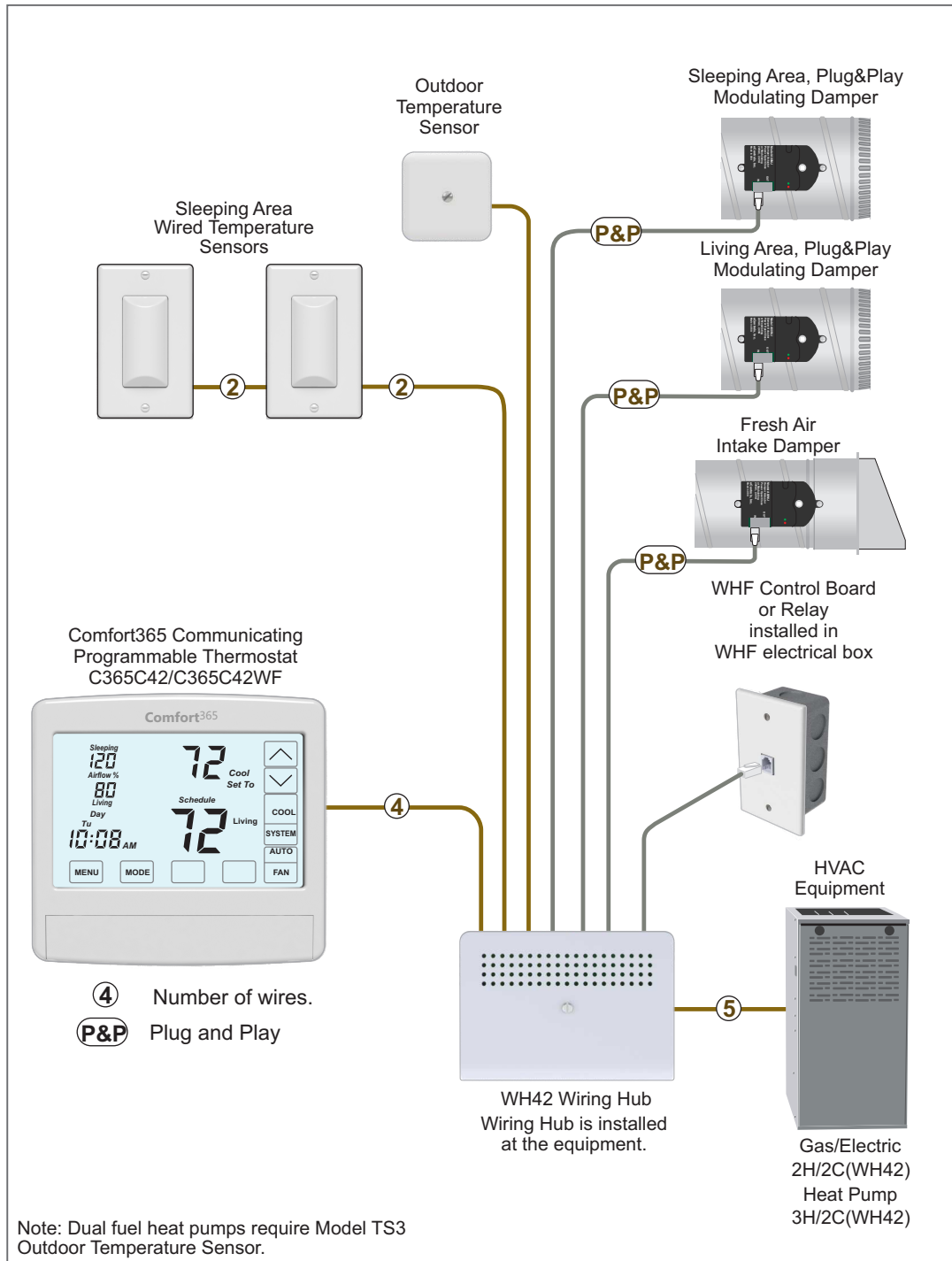
### Wiring Hub

Model WH11  
For single stage G/E  
Model WH32  
For multi-stage G/E or HP

### Dampers

Model R80CJ-XX  
Plug&Play  
Modulating Damper  
XX is 6 to 20-inch diameter

# C365C42 or C365C42WF with WH42 with Wired Sensors



## Comfort365 Thermostats

**Model C365C42**  
**Model C365C42WF**  
With WiFi

## Temperature Sensors

**Model TS510W**  
For single sleeping area sensor installations  
**Model TS520W**  
For dual sleeping area sensor installations  
**Model TS3**  
Outdoor temperature sensor

## Wiring Hub

**Model WH42**  
For multi-stage G/E or HP

## Airflow Dampers

**Model R80CJ-XX**  
Plug&Play  
Modulating Damper  
XX is 6 to 20-inch diameter

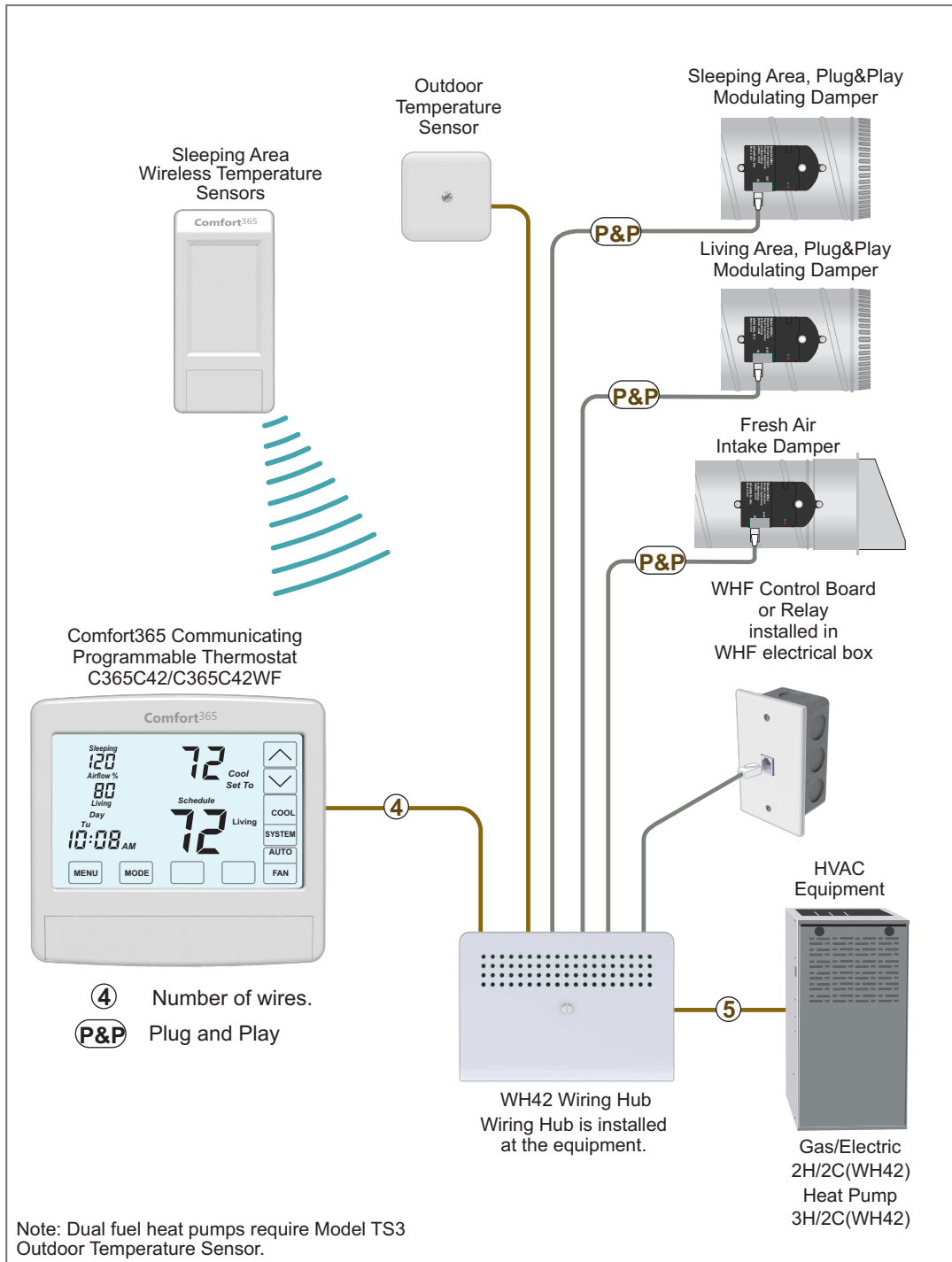
## Fresh Air Damper

**Model R80ZJ-XX**  
Plug&Play  
Open/Close Damper  
XX is 6 to 20-inch diameter

## WHF Control Board

**Model FC2J**  
Plug&Play  
Controls 1 or 2-Speed PSC  
or PWM control of ECM

# C365C42 or C365C42WF with WH42 with Wireless Sensors



## Comfort365 Thermostats

Model C365C42  
Model C365C42WF  
With WiFi

## Temperature Sensors

Model TS5WL  
For single or dual sleeping area sensor installations

Model TS3  
Outdoor temperature sensor

## Wiring Hub

Model WH42  
For multi-stage G/E or HP

## Airflow Dampers

Model R80CJ-XX  
Plug&Play  
Modulating Damper  
XX is 6 to 20-inch diameter

## Fresh Air Damper

Model R80ZJ-XX  
Plug&Play  
Open/Close Damper  
XX is 6 to 20-inch diameter

## WHF Control Board

Model FC2J  
Plug&Play  
Controls 1 or 2-Speed PSC  
or PWM control of ECM

## 5-Year Warranty

All products have a 5-year warranty, limited to the repair or replacement of the product due to defective material or workmanship.

# eControls

26072 Merit Circle #110, Laguna Hills, CA 92653  
949-916-0945, [www.eControlsUSA.com](http://www.eControlsUSA.com)